

# The New Universe & the Human Future:

How a shared cosmology  
could transform the world

---

by Nancy Abrams and

Joel Primack, 2011



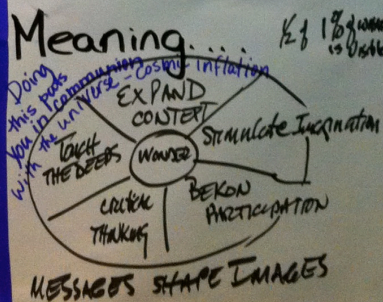
# Chapter 1 The New Universe

**Big Idea...** <sup>①</sup>  
3 BIG PICTURES OF UNIVERSE IN HISTORY  
NOW SCIENTISTS USING SAME "DOUBLE DARK THEORY"

**An Example...**  
HUBBLE TELESCOPE - ENABLES US TO SEE WHAT WE CANNOT SEE OR WHAT MUST BE THERE THROUGH UNIVERSE  
"THE NEW NUT" - DARK-DARK THEORY

**A Question...**  
WHAT IS OUR SIGNIFICANCE IN THIS "DARK-DARK" META-PHOR? IS THIS DOUBLE-DARK NOT JUST THE NEW DESCRIPTION OF NUT - TRUTH = HYPOTHESIS NOT YET DISCOVERED

**An Image...**



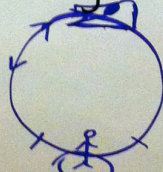
# Chapter 2 Size is Destiny

**Big idea...** <sup>②</sup>  
Our experience of reality is but a small fragment of the total cosmos.

**An example...**  
is the video of powers of 10.

**A question...**  
How can we expand our direct experience and understanding of reality?

**An image...**



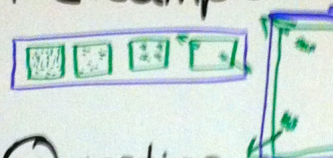
**Meaning...**

- FAC'S MAKE THE INVISIBLE VISIBLE FOR IND. + GROUPS
- KNOWLEDGE, WISE, & GENEROUS PRODUCTIVE + RESPECTFUL ARE CORE TOP VALUES.
- > SCALE DEMANDS NEW METHODS

# Chapter 3. We are Stardust

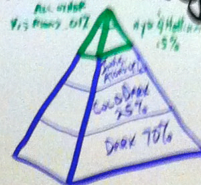
**Big Idea...**  
ALL VISIBLE MATTER IS JUST A SMALL PART OF THE VERY UNIVERSE.

**An Example...**



**A Question...**  
What if all intelligence doesn't require physical form

**An Image...**



**Meaning...**  
using energy in fac

# Chapter 4 Our Place in Time

**Big idea...** <sup>④</sup>  
We are connected to all of time

**An example...**  
The Hubble Ultra Deep Field image - 1st view of faint & distant galaxies

**A question...**  
Where in the evolution of the universe are we?

**An image...**  
Cosmic spheres of time



**Meaning...**  
Inviting others into an expanded view - past, present, future



# Chapter 5. This Cosmically Pivotal Moment.

## Big Idea... ③

- MID-POINT IN TIME IN 4 DIMENSIONS
- COSMIC INFLATION → COSMIC EXPANSION

## An Example...

CONSUMPTION = WHAT IS YOUR WEIGHT? WE EACH CONSUME THAT IN RESOURCES  
P. 89

## A Question...

HOW DOES HUMAN CREATIVITY STAY AHEAD OF OUR CONSUMPTIVE IMPACT

## An Image...

POND SCUM  
EXPONENTIAL →  
I SNEAKS UP ON YOU!

## Meaning...

DENIAL IS EASY

→ FOR GROUPS

→ FACILITATORS

NOW IS IDEAL TIME TO BRING MEANING, CONNECTION, SPIRITUAL...

# Chapter 6 Bringing The Universe Down to Earth

## Big idea... ⑥

Changing our directions and priorities by creating a shared cosmology

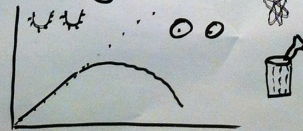
## An example...

Using scientific meditation as one way to build a shared cosmology.

## A question...

How do we deal with "official evasion" given short-term political systems?

## An image...



## Meaning...

To be transparent about facilitator's agenda to awaken people to agree on what they disagree about!

# Chapter 7 A New Origin Story.

## Big Idea... ⑦

THERE IS A POTENTIAL TRANS-CENTRIST ORIGIN STORY THAT COULD UNIFY HUMANITY

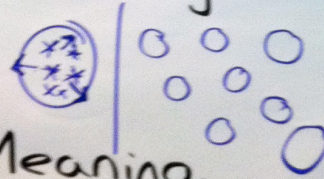
## An Example...

FROM ONE UNIVERSE TO MANY UNIVERSES.

## A Question...

HOW DO WE GENERATE UNIFIED AGREEMENT ON A SHARED ORIGIN STORY

## An Image...



## Meaning...

Facilitators are interested in a unifying origin story - context setting connecting past-present-future. If past, present, then next future.

# Chapter 8 Cosmic Society Now.

## Big idea...

Possible & necessary to take action now - to integrate science & myth

An example... reading our children (grandchildren) the cosmic story

## A question...

How can from science as negotiable to be part of fabric of new mythology

## An image...

child-earth-cosmos

## Meaning...

Look for opportunities for evolving the cosmic story



# REPORTS

- Key concept of the chapter?
- A gripping example of the key concept...
- A question I have is...
- An image that pulls it all together for me...
- So... what does this mean for me as a facilitator?

Facilitated by Christopher and Sheila Cooke  
January 2012  
ToP Network Annual Meeting, Sacramento